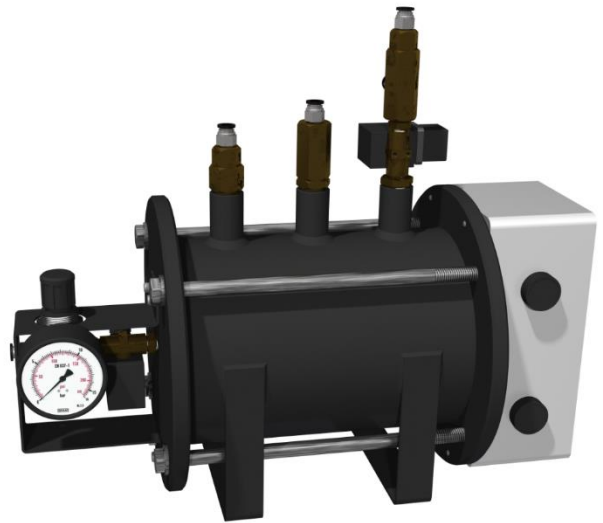


# AUTOMATIC CONDENSATE DRAIN – EVD xx

## DESCRIPTION

EVD xx has been developed for fully automatic discharging of condensate or any other non-aggressive fluid from vacuum system. The unit can be installed as external drain on any application specified below. Condensate accumulates in the aluminium reservoir and when the level is high enough condensate is being discharged from the system by the compressed air.



## APPLICATIONS<sup>(2)</sup>

- Vacuum systems

<sup>(1)</sup>For any other technical gas please contact us or your local dealer

## TECHNICAL SPECIFICATION

Operating temperature	1,5 - 65 °C	35 - 149 °F
Operating pressure	20 - 2000mbar(abs)	0,29 – 29 psi
Operating media	Condensate (air, water, oil); Non-agressive	
Nominal discharge capacity		
Discharge orifice cross section		
Voltage	230 VAC 50-60 Hz	
Power	24VA	
Inlet connection	G ½" (NPT on request)	
Outlet connection	G ½" (NPT on request)	
Compressed air supply	Push connection for tube ø8	
Air vent connection	Push connection for tube ø8	
Reservoir volume		
Weight		
Valve type	Direct acting, Normally closed	

## MATERIALS

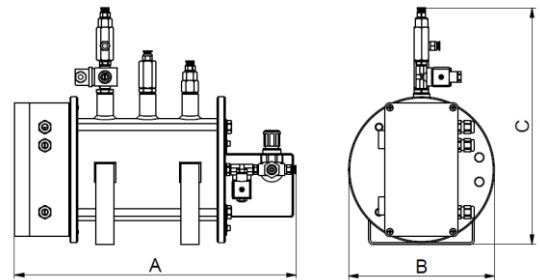
Housing material	Aluminium (EN-AC-46000)
Fittings, Screws	Brass, Brass-zinc plated, Steel
Sealing	NBR
Cover	PA 6
<b>Corrosion protection</b>	Anodised

**DIMENSIONS**

Type	A	B	C
EVD	465	240	390

**PRESSURE EQUIPMENT DIRECTIVE PED  
97/23/CE (Fluid group 2)**

Product type	Category, module
EVD xx	Not required




**MAINTENANCE**

Once per year make a visual check of the drain and make sure there is no visual damage or leakage. Clean interior of the reservoir regularly. Intervals of cleaning depend on contamination of condensate. Replace the sealings if necessary.

**RECCOMENDATIONS**

- We recommend the use of ball valve between pressure vessel and inlet connection.

**INFORMATION IN THIS DOCUMENT IS SUBJECT TO CHANGE WITHOUT NOTICE**

	<p>Our quality management system is certified by BUREAU VERITAS in conformity with ISO 9001:2008 Reg. number: 200285</p>	
---	--	--