

GROUP
TECHNO-AV
air care beyond compare

L.T.C.
Laser technology center

מדחסים בורגיים



Single Stage



7.5KW



15KW



22KW



37KW



45KW



55KW

Single Stage



75KW



90KW

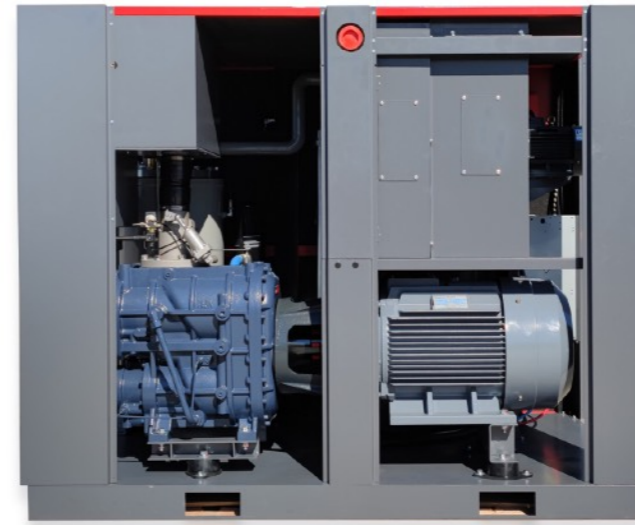


110KW

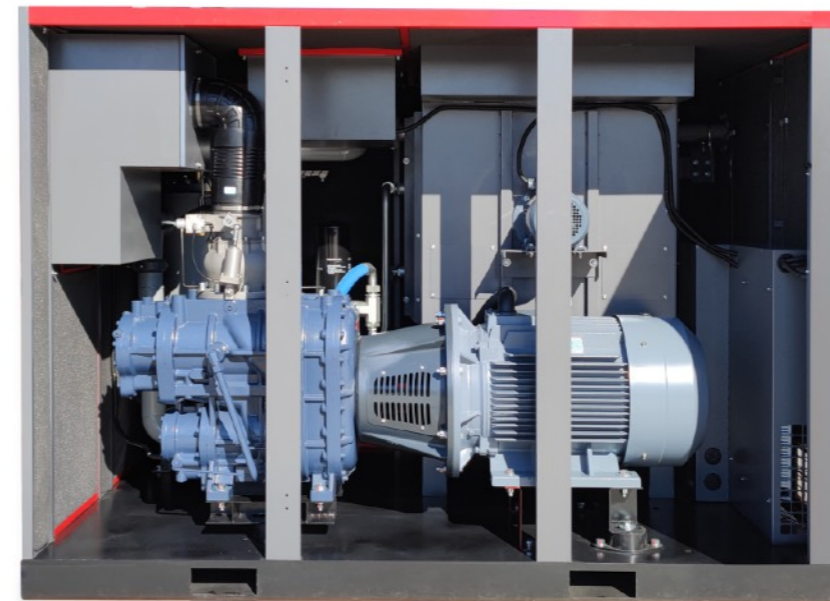


132KW

Double Stage



75KW two stage



90KW two stage

Double Stage



160KW fixed speed

Variable Speed air compressor parameter

Model		7.5KW	11KW	15KW	18.5KW	22KW	30KW	37KW	45KW	55KW	75KW	90KW	110KW	132KW	160KW	185KW	200KW	250KW
Motor	Power(kw)	7.5	11	15	18.5	22	30	37	45	55	75	90	110	132	160	185	200	250
	Horsepower	10	15	20	25	30	40	50	60	75	100	125	150	175	220	250	270	350
Air displacement/ Working pressure (M ³ /Min./MPa)		1.2/0.7	1.6/0.7	2.5/0.7	3.2/0.7	3.8/0.7	5.3/0.7	6.8/0.7	7.4/0.7	10.0/0.7	13.4/0.7	16.2/0.7	21.0/0.7	24.5/0.7	28.7/0.7	32.0/0.7	36.7/0.7	42.0/0.7
		1.1/0.8	1.5/0.8	2.3/0.8	3.0/0.8	3.6/0.8	5.0/0.8	6.2/0.8	7.0/0.8	9.2/0.8	12.6/0.8	15.0/0.8	19.8/0.8	23.2/0.8	27.6/0.8	30.5/0.8	34.5/0.8	40.5/0.8
		0.9/1.0	1.3/1.0	2.1/1.0	2.7/1.0	3.2/1.0	4.5/1.0	5.6/1.0	6.2/1.0	8.5/1.0	11.2/1.0	13.8/1.0	17.4/1.0	20.5/1.0	24.6/1.0	27.5/1.0	30.2/1.0	38.1/1.0
		0.8/1.2	1.1/1.2	1.9/1.2	2.4/1.2	2.7/1.2	4.0/1.2	5.0/1.2	5.6/1.2	7.6/1.2	10.0/1.2	12.3/1.2	14.8/1.2	17.4/1.2	21.5/1.2	24.8/1.2	27.8/1.2	34.6/1.2
Air outlet diameter		DN20	DN25	DN25	DN25	DN25	DN40	DN40	DN40	DN50	DN50	DN50	DN65	DN65	2½"	DN80	DN80	DN80
Lubricating oil volume (L)		10	16	16	18	18	30	30	30	65	65	72	90	90	85	120	210	220
Noise level dB(A)		60±2	62±2	62±2	64±2	64±2	66±2	66±2	66±2	68±2	68±2	70±2	70±2	70±2	75±2	76±2	76±2	76±2
Driven method		Direct driven	Direct driven	Direct driven	Direct driven	Direct driven	Direct driven	Direct driven	Direct driven	Direct driven	Direct driven	Direct driven	Direct driven	Direct driven	Direct driven	Direct driven	Direct driven	Direct driven
Start method		PM VSD	PM VSD	PM VSD	PM VSD	PM VSD	PM VSD	PM VSD	PM VSD	PM VSD	PM VSD	PM VSD	PM VSD	PM VSD	PM VSD	PM VSD	PM VSD	PM VSD
Exten al dimen sions	Length (mm)	950	1150	1150	1350	1350	1500	1500	1500	1900	1900	2450	2450	2450	2700	2800	2800	3250
	Width (mm)	670	820	820	920	920	1020	1020	1020	1260	1260	1660	1660	1660	1800	1800	1800	2100
	Height (mm)	1030	1130	1130	1230	1230	1310	1310	1310	1600	1600	1700	1700	1700	1950	1950	1950	2300
Weight (kg)		250	400	400	550	550	700	750	800	1750	1850	1950	2200	2500	3450	3450	3850	4250

Fixed speed air compressors parameter

Model		7.5KW	11KW	15KW	18.5KW	22KW	30KW	37KW	45KW	55KW	75KW	90KW	110KW	132KW	160KW	185KW	200KW	250KW
Motor	Power(kw)	7.5	11	15	18.5	22	30	37	45	55	75	90	110	132	160	185	200	250
	Horsepower	10	15	20	25	30	40	50	60	75	100	125	150	175	215	250	270	350
Air displacement/ Working pressure (M ³ /Min./MPa)		1.2/0.7	1.6/0.7	2.5/0.7	3.2/0.7	3.8/0.7	5.3/0.7	6.8/0.7	7.4/0.7	10.0/0.7	13.4/0.7	16.2/0.7	21.0/0.7	24.5/0.7	29.8/0.7	32.6/0.7	35.5/0.7	45.6/0.7
		1.1/0.8	1.5/0.8	2.3/0.8	3.0/0.8	3.6/0.8	5.0/0.8	6.2/0.8	7.0/0.8	9.2/0.8	12.6/0.8	15.0/0.8	19.8/0.8	23.2/0.8	28.3/0.8	31.9/0.8	34.4/0.8	44.0/0.8
		0.9/1.0	1.3/1.0	2.1/1.0	2.7/1.0	3.2/1.0	4.5/1.0	5.6/1.0	6.2/1.0	8.5/1.0	11.2/1.0	13.8/1.0	17.4/1.0	20.5/1.0	25.0/1.0	28.5/1.0	32.6/1.0	36.3/1.0
		0.8/1.2	1.1/1.2	1.9/1.2	2.4/1.2	2.7/1.2	4.0/1.2	5.0/1.2	5.6/1.2	7.6/1.2	10.0/1.2	12.3/1.2	14.8/1.2	17.4/1.2	21.8/1.2	25.5/1.2	28.9/1.2	34.6/1.2
Air outlet diameter		DN20	DN25	DN25	DN25	DN25	DN40	DN40	DN40	DN50	DN50	DN50	DN65	DN65	DN80	DN80	DN80	DN100
Lubricating oil volume (L)		10	16	16	18	18	30	30	30	65	65	72	90	90	85	120	210	220
Noise level dB(A)		60±2	62±2	62±2	64±2	64±2	66±2	66±2	66±2	68±2	68±2	70±2	70±2	70±2	77±3	77±3	77±3	78±3
Driven method		Direct driven	Direct driven	Direct driven	Direct driven	Direct driven	Direct driven	Direct driven	Direct driven	Direct driven	Direct driven	Direct driven	Direct driven	Direct driven	Direct driven	Direct driven	Direct driven	Direct driven
Start method		Y-Δ	Y-Δ	Y-Δ	Y-Δ	Y-Δ	Y-Δ	Y-Δ	Y-Δ	Y-Δ	Y-Δ	Y-Δ	Y-Δ	Y-Δ	Y-Δ	Y-Δ	Y-Δ	Y-Δ
External dimensions	Length (mm)	950	1150	1150	1350	1350	1500	1500	1500	1900	1900	2450	2450	2450	2650	2650	3000	2454
	Width (mm)	670	820	820	920	920	1020	1020	1020	1260	1260	1660	1660	1660	1488	1488	1740	1664
	Height (mm)	1030	1130	1130	1230	1230	1310	1310	1310	1600	1600	1700	1700	1700	1900	1900	2100	1704
Weight (kg)		250	400	400	550	550	700	750	800	1750	1850	1950	2200	2500	3300	4000	4700	2504

Variable speed 2 stage air compressor

Model	Working pressure		Capacity		Power		Noise	Air outlet diameter	Weight	Extenal dimensions
	bar	psig	m3/min	cfm	kw	hp	dB		kg	mm
55KW	8	116	3.9-13.2	138-466	55	75	65±3	G2	2450	2160*1350*1750
	10	145	3.1-10.7	109-378	55	75	65±3	G2	2450	2160*1350*1750
	13	189	2.6-8.8	92-311	55	75	65±3	G2	2450	2160*1350*1750
75KW	8	116	5.0-16.8	177-593	75	100	68±3	G2	2550	2160*1350*1750
	10	145	4.1-13.8	145-487	75	100	68±3	G2	2550	2160*1350*1750
	13	189	3.6-12.3	127-434	75	100	68±3	G2	2550	2160*1350*1750
90KW	8	116	6.0-20.1	212-710	90	120	70±3	DN65	3250	2420*1530*1720
	10	145	5.2-17.3	184-611	90	120	70±3	DN65	3250	2420*1530*1720
	13	189	4.8-15.9	170-562	90	120	70±3	DN65	3250	2420*1530*1720
110KW	8	116	7.1-23.5	251-830	110	150	72±3	DN80	3600	2650*1600*1850
	10	145	5.9-19.8	210-699	110	150	72±3	DN80	3600	2650*1600*1850
	13	189	5.3-17.8	187-629	110	150	72±3	DN80	3600	2650*1600*1850
132KW	8	116	8.0-28.1	283-992	132	175	74±3	DN80	3700	2650*1600*1850
	10	145	7.3-24.3	257-858	132	175	74±3	DN80	3700	2650*1600*1850
	13	189	6.1-20.2	214-713	132	175	74±3	DN80	3700	2650*1600*1850
160KW	8	116	10.1-33.6	356-1187	160	215	75±3	DN100	4250	3350*1900*1950
	10	145	9.2-30.5	323-1077	160	215	75±3	DN100	4250	3350*1900*1950
	13	189	8.4-28.0	297-989	160	215	75±3	DN100	4250	3350*1900*1950
185KW	8	116	12.4-38.7	438-1367	185	250	76±3	DN100	4650	3350*1900*1950
	10	145	10.4-34.8	369-1229	185	250	76±3	DN100	4650	3350*1900*1950
	13	189	9.7-32.3	342-1141	185	250	76±3	DN100	4650	3350*1900*1950
200KW	8	116	12.8-42.6	451-1504	200	270	76±3	DN100	5550	3350*1900*1950
	10	145	12.2-40.5	431-1430	200	270	76±3	DN100	5550	3350*1900*1950
	13	189	10.6-35.1	374-1240	200	270	76±3	DN100	5550	3350*1900*1950
220KW	8	116	14.2-47.3	501-1670	220	300	78±3	DN100	5650	3700*2060*2150
	10	145	12.8-42.5	450-1501	220	300	78±3	DN100	5650	3700*2060*2150
	13	189	12.0-37.4	424-1321	220	300	78±3	DN100	5650	3700*2060*2150
250KW	8	116	18.5-52.8	653-1895	250	350	78±3	DN100	6450	3700*2060*2150
	10	145	15.1-48.3	533-1706	250	350	78±3	DN100	6450	3700*2060*2150
	13	189	13.3-43.0	470-1518	250	350	78±3	DN100	6450	3700*2060*2150

Fixed speed 2 stage air compressor

Model	Working pressure		Capacity		Power		Noise	Air outlet diameter	Weight	External dimensions
	bar	psig	m3/min	cfm	kw	hp	dB		kg	mm
55KW	8	116	12.8	452.0	55	75	65±3	G2	2400	2160*1350*1750
	10	145	10.4	367.3	55	75	65±3	G2	2400	2160*1350*1750
	13	189	8.8	310.8	55	75	65±3	G2	2400	2160*1350*1750
75KW	8	116	16.5	582.7	75	100	68±3	G2	2500	2160*1350*1750
	10	145	13.5	476.7	75	100	68±3	G2	2500	2160*1350*1750
	13	189	12.2	430.8	75	100	68±3	G2	2500	2160*1350*1750
90KW	8	116	20.1	709.8	90	120	70±3	DN65	3150	2420*1530*1720
	10	145	17.3	610.9	90	120	70±3	DN65	3150	2420*1530*1720
	13	189	15.9	561.5	90	120	70±3	DN65	3150	2420*1530*1720
110KW	8	116	23.5	829.9	110	150	72±3	DN80	3500	2650*1600*1850
	10	145	19.8	699.2	110	150	72±3	DN80	3500	2650*1600*1850
	13	189	17.6	621.5	110	150	72±3	DN80	3500	2650*1600*1850
132KW	8	116	27.8	981.7	132	175	74±3	DN80	3600	2650*1600*1850
	10	145	24.0	847.6	132	175	74±3	DN80	3600	2650*1600*1850
	13	189	20.0	706.3	132	175	74±3	DN80	3600	2650*1600*1850
160KW	8	116	33.3	1176.0	160	215	75±3	DN100	4000	3350*1900*1950
	10	145	30.0	1059.4	160	215	75±3	DN100	4000	3350*1900*1950
	13	189	28.2	995.9	160	215	75±3	DN100	4000	3350*1900*1950
185KW	8	116	38.6	1363.1	185	250	76±3	DN100	4500	3350*1900*1950
	10	145	34.4	1214.8	185	250	76±3	DN100	4500	3350*1900*1950
	13	189	31.8	1123.0	185	250	76±3	DN100	4500	3350*1900*1950
200KW	8	116	42.5	1500.9	200	270	78±3	DN100	5400	3350*1900*1950
	10	145	40.2	1419.6	200	270	78±3	DN100	5400	3350*1900*1950
	13	189	35.0	1236.0	200	270	78±3	DN100	5400	3350*1900*1950
220KW	8	116	47.1	1663.3	220	300	78±3	DN100	5500	3700*2060*2150
	10	145	24.5	1500.9	220	300	78±3	DN100	5500	3700*2060*2150
	13	189	37.2	1313.7	220	300	78±3	DN100	5500	3700*2060*2150
250KW	8	116	52.5	1854.0	250	350	78±3	DN100	5600	3700*2060*2150
	10	145	48.2	1702.2	250	350	78±3	DN100	5600	3700*2060*2150
	13	189	43.0	1518.5	250	350	78±3	DN100	5600	3700*2060*2150